



# C1orf181 Polyclonal Antibody

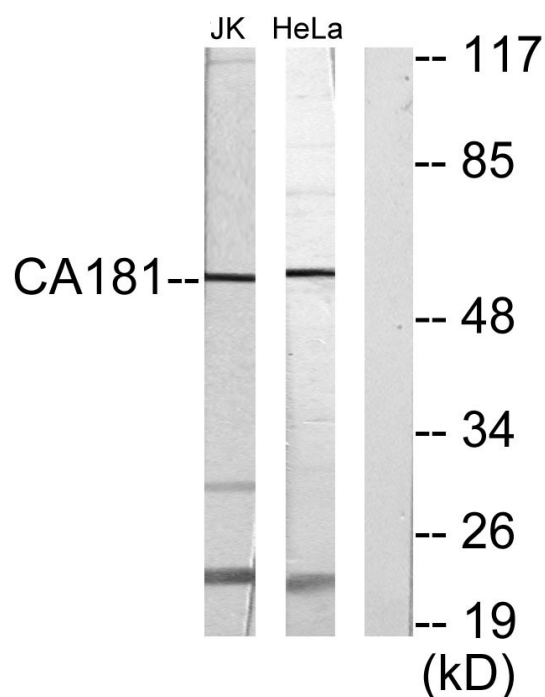
<b>Catalog No</b>	YP-Ab-01586
<b>Isotype</b>	IgG
<b>Reactivity</b>	Human;Mouse
<b>Applications</b>	WB;IHC;IF;ELISA
<b>Gene Name</b>	ZNHIT6
<b>Protein Name</b>	Box C/D snoRNA protein 1
<b>Immunogen</b>	The antiserum was produced against synthesized peptide derived from human CA181. AA range:301-350
<b>Specificity</b>	C1orf181 Polyclonal Antibody detects endogenous levels of C1orf181 protein.
<b>Formulation</b>	Liquid in PBS containing 50% glycerol, 0.5% BSA and 0.02% sodium azide.
<b>Source</b>	Polyclonal, Rabbit,IgG
<b>Purification</b>	The antibody was affinity-purified from rabbit antiserum by affinity-chromatography using epitope-specific immunogen.
<b>Dilution</b>	WB: 1/500 - 1/2000. ELISA: 1/5000.. IF 1:50-200
<b>Concentration</b>	1 mg/ml
<b>Purity</b>	≥90%
<b>Storage Stability</b>	-20°C/1 year
<b>Synonyms</b>	ZNHIT6; BCD1; C1orf181; Box C/D snoRNA protein 1; Serologically defined breast cancer antigen NY-BR-75; Zinc finger HIT domain-containing protein 6
<b>Observed Band</b>	54kD
<b>Cell Pathway</b>	extracellular exosome,pre-snoRNP complex,
<b>Tissue Specificity</b>	
<b>Function</b>	small nucleolar ribonucleoprotein complex assembly, box C/D snoRNP assembly, ribonucleoprotein complex biogenesis,ribonucleoprotein complex assembly, cellular macromolecular complex subunit organization, cellular macromolecular complex assembly, macromolecular complex subunit organization, macromolecular complex assembly,
<b>Background</b>	ZNHIT6 (Zinc Finger HIT-Type Containing 6) is a Protein Coding gene. GO annotations related to this gene include identical protein binding and enzyme binding.
<b>matters needing attention</b>	Avoid repeated freezing and thawing!



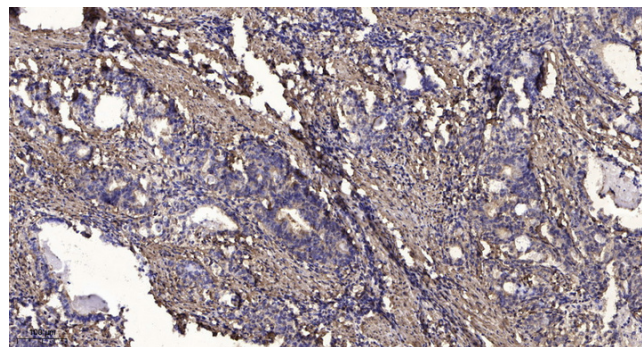
## Usage suggestions

This product can be used in immunological reaction related experiments. For more information, please consult technical personnel.

## Products Images



Western blot analysis of lysates from Jurkat and HeLa cells, using CA181 Antibody. The lane on the right is blocked with the synthesized peptide.



Immunohistochemical analysis of paraffin-embedded human Gastric adenocarcinoma. 1, Antibody was diluted at 1:200 (4° overnight). 2, Tris-EDTA, pH 9.0 was used for antigen retrieval. 3, Secondary antibody was diluted at 1:200 (room temperature, 45min).